

What is cluster analysis?

CLUSTER ANALYSIS IN R



Dmitriy (Dima) Gorenshteyn

Lead Data Scientist,

What is clustering?



What is clustering?



What is clustering?



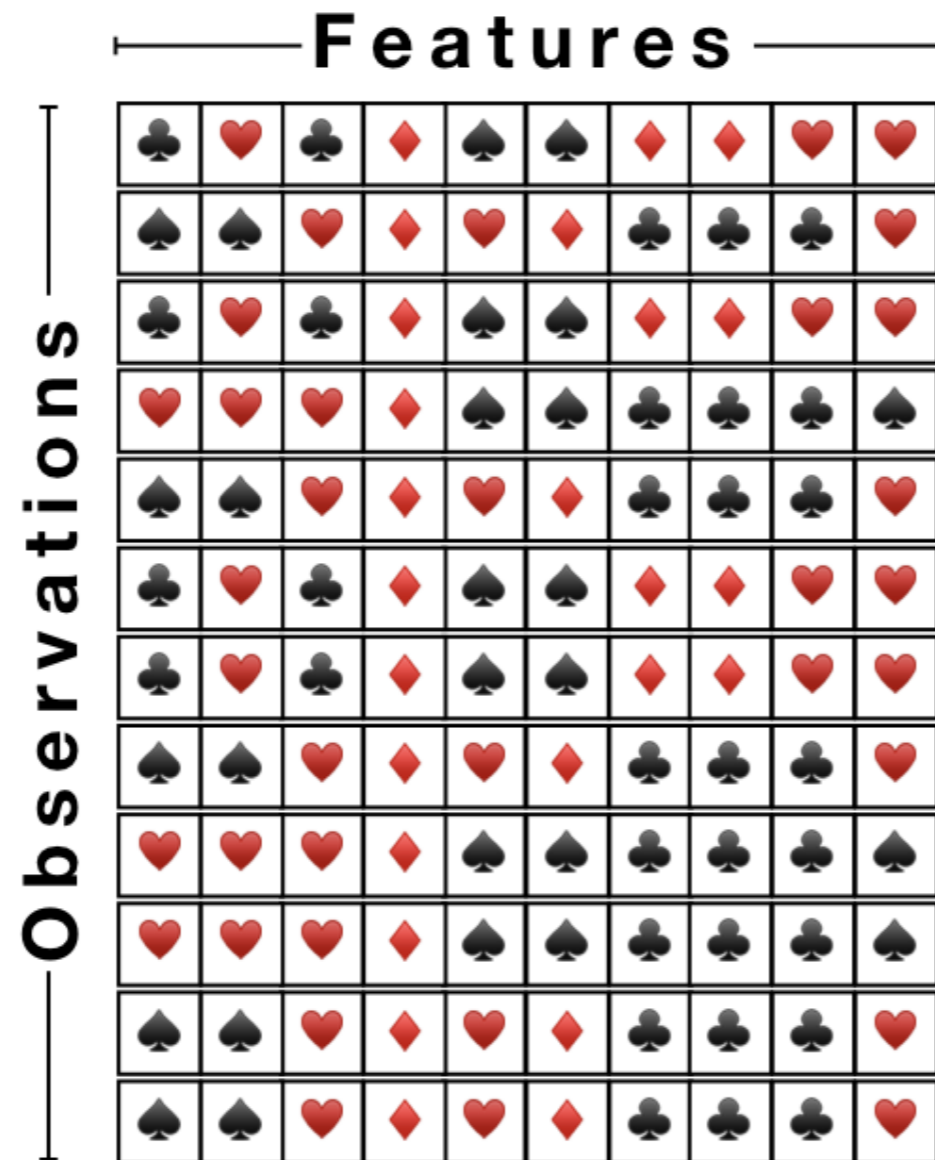
What is clustering?

♣	♥	♣	♦	♠	♠	♦	♦	♥	♥
♠	♠	♥	♦	♥	♦	♣	♣	♣	♥
♣	♥	♣	♦	♠	♠	♦	♦	♥	♥
♥	♥	♥	♦	♠	♠	♣	♣	♣	♠
♠	♠	♥	♦	♥	♦	♣	♣	♣	♥
♣	♥	♣	♦	♠	♠	♦	♦	♥	♥

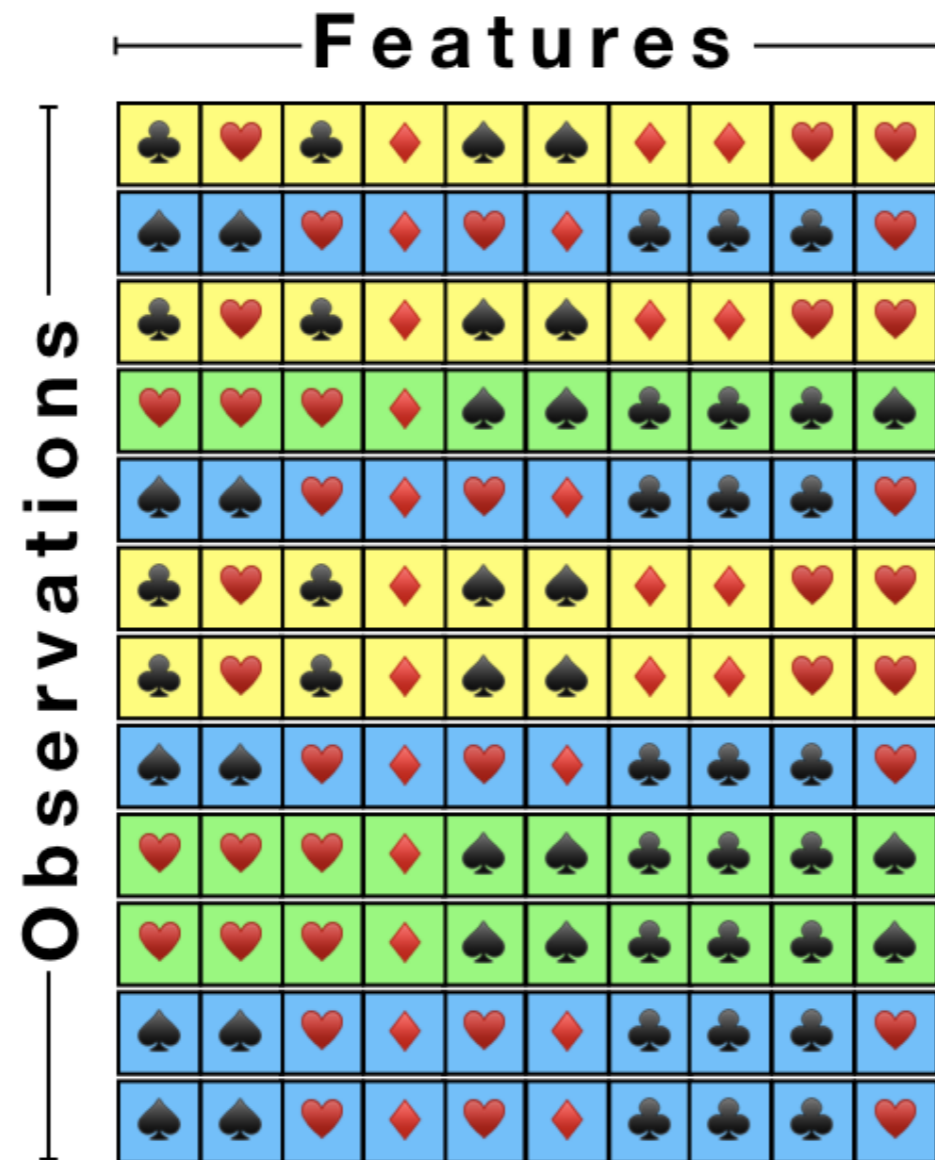
What is clustering?

	A	B	C	D	E	F	G	H	I	J
1	♣	♥	♣	♦	♠	♠	♦	♦	♥	♥
2	♠	♠	♥	♦	♥	♦	♣	♣	♣	♥
3	♣	♥	♣	♦	♠	♠	♦	♦	♥	♥
4	♥	♥	♥	♦	♠	♠	♣	♣	♣	♠
5	♠	♠	♥	♦	♥	♦	♣	♣	♣	♥
6	♣	♥	♣	♦	♠	♠	♦	♦	♥	♥
7	♣	♥	♣	♦	♠	♠	♦	♦	♥	♥
8	♠	♠	♥	♦	♥	♦	♣	♣	♣	♥
9	♥	♥	♥	♦	♠	♠	♣	♣	♣	♠
10	♥	♥	♥	♦	♠	♠	♣	♣	♣	♠
11	♠	♠	♥	♦	♥	♦	♣	♣	♣	♥
12	♠	♠	♥	♦	♥	♦	♣	♣	♣	♥

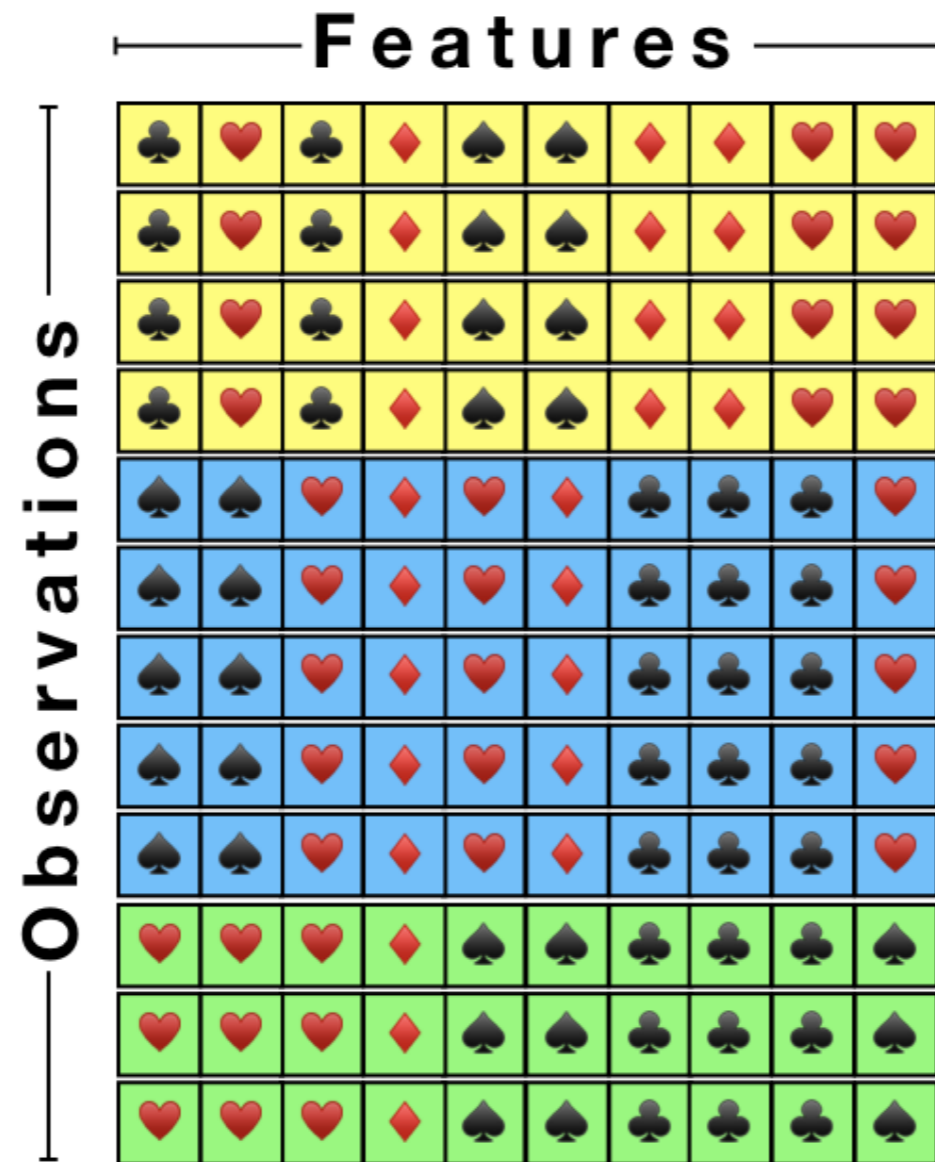
What is clustering?



What is clustering?



What is clustering?



What is clustering?

A form of exploratory data analysis (**EDA**) where **observations** are divided into meaningful groups that share common characteristics (**features**).

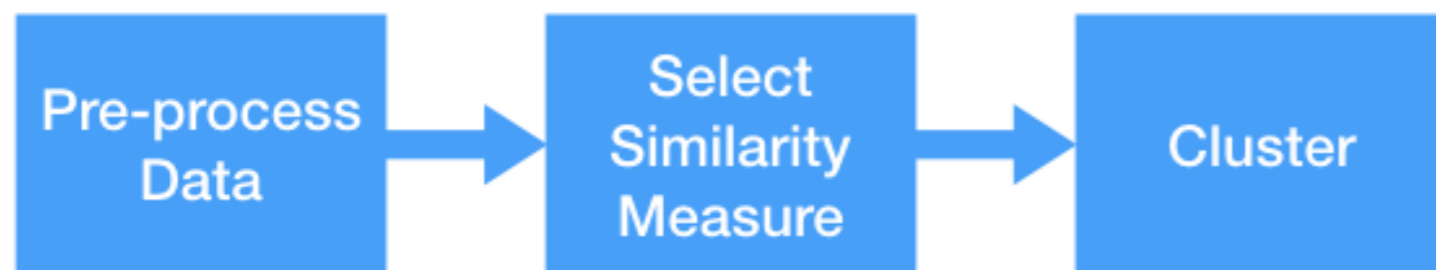
The flow of cluster analysis

Pre-process
Data

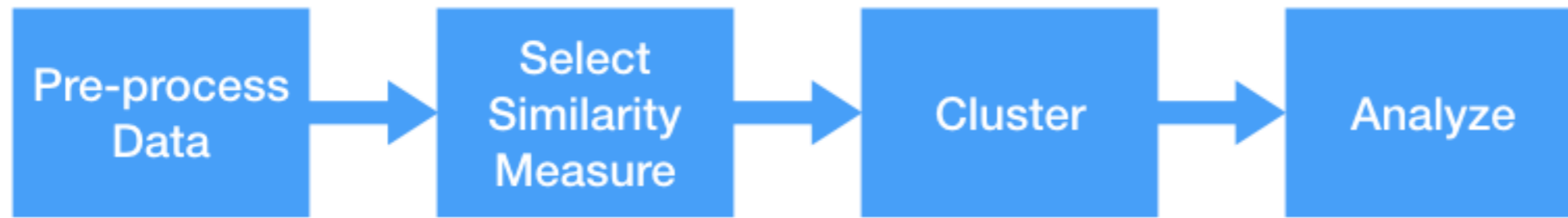
The flow of cluster analysis



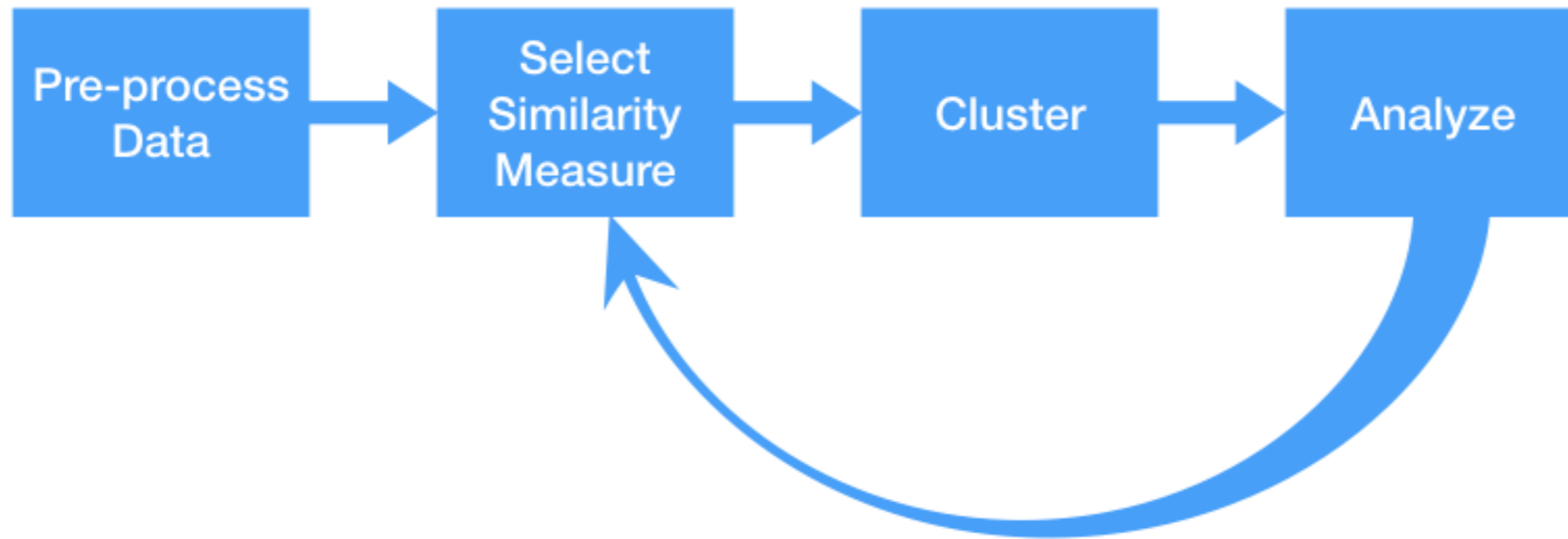
The flow of cluster analysis



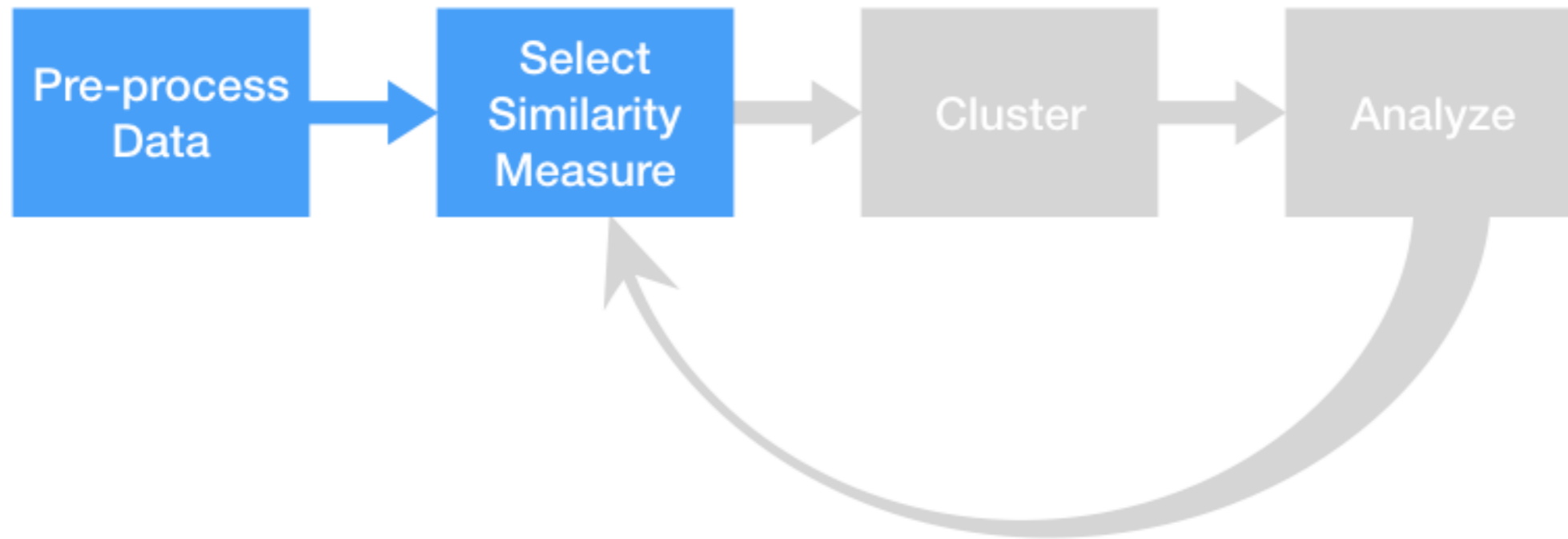
The flow of cluster analysis



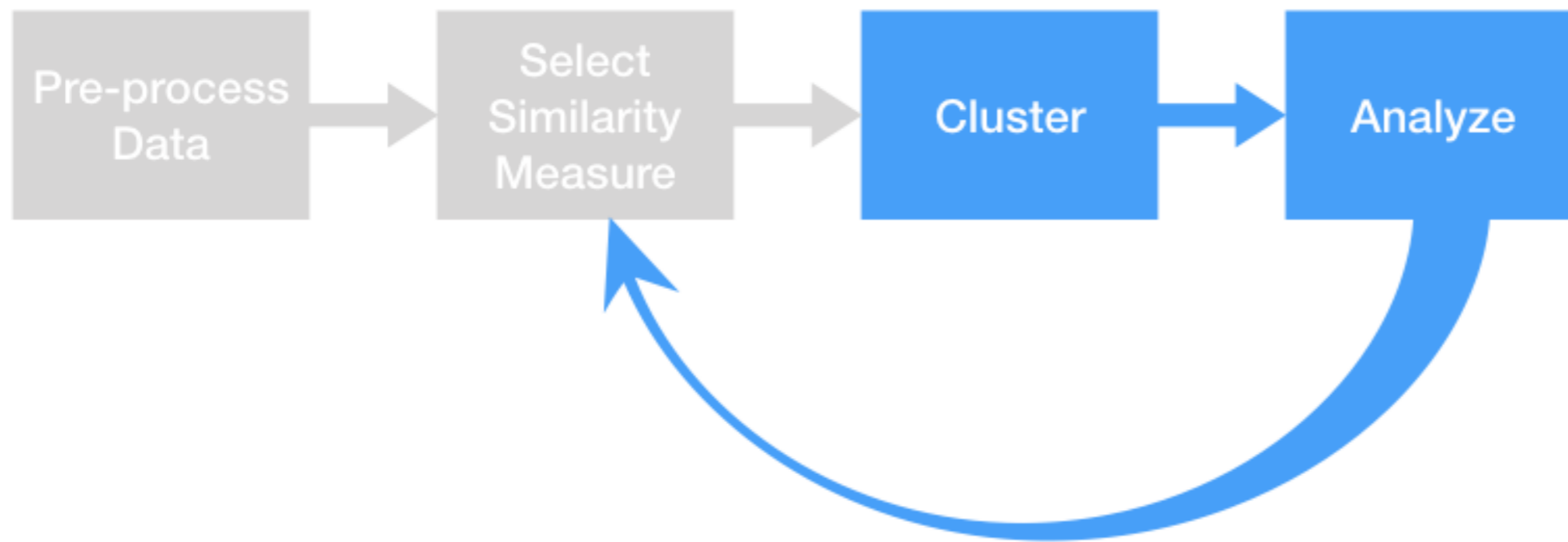
The flow of cluster analysis



Structure of this course



Structure of this course



Let's learn!

CLUSTER ANALYSIS IN R

Distance between two observations

CLUSTER ANALYSIS IN R



Dmitriy (Dima) Gorenshteyn

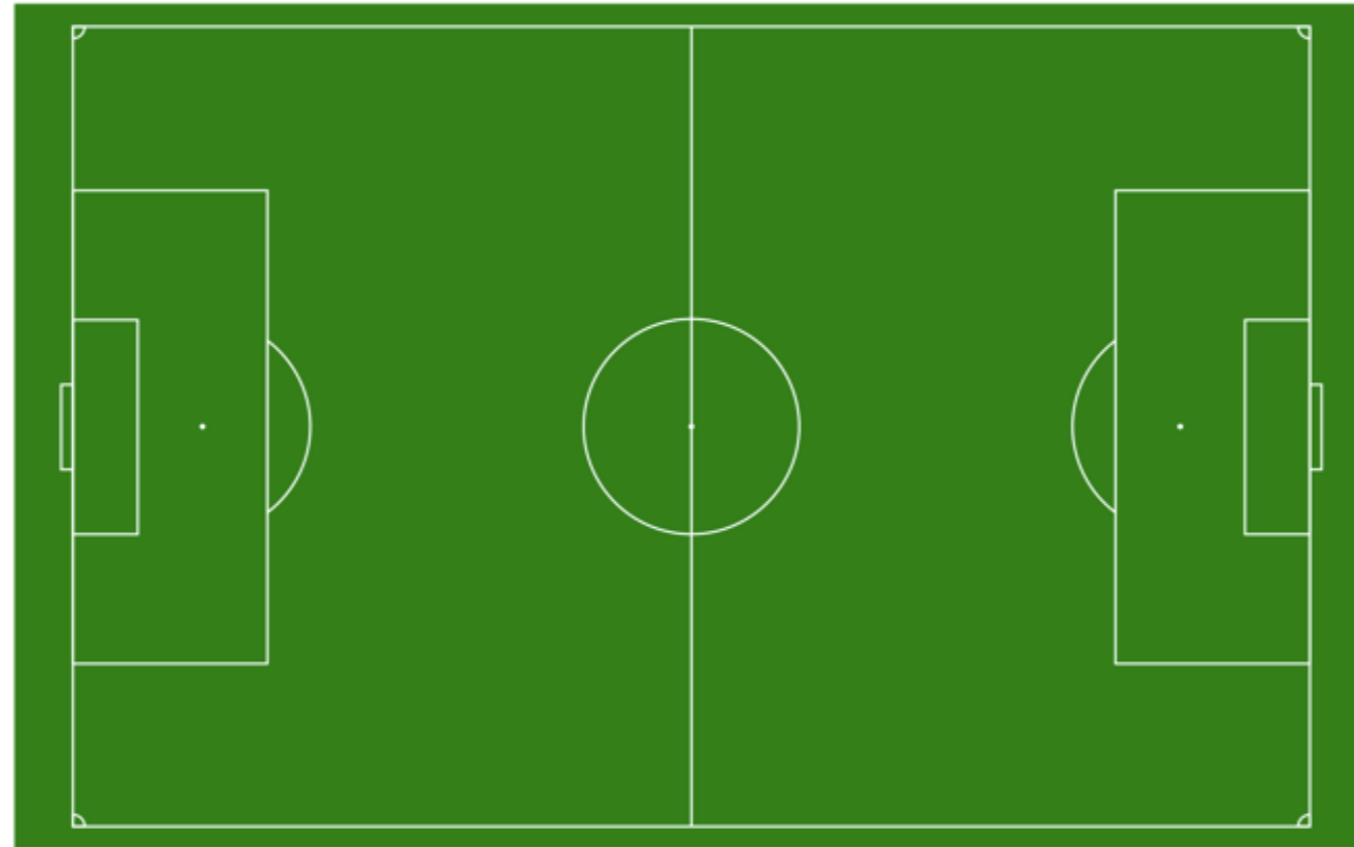
Lead Data Scientist, Memorial Sloan
Kettering Cancer Center

Distance vs. Similarity

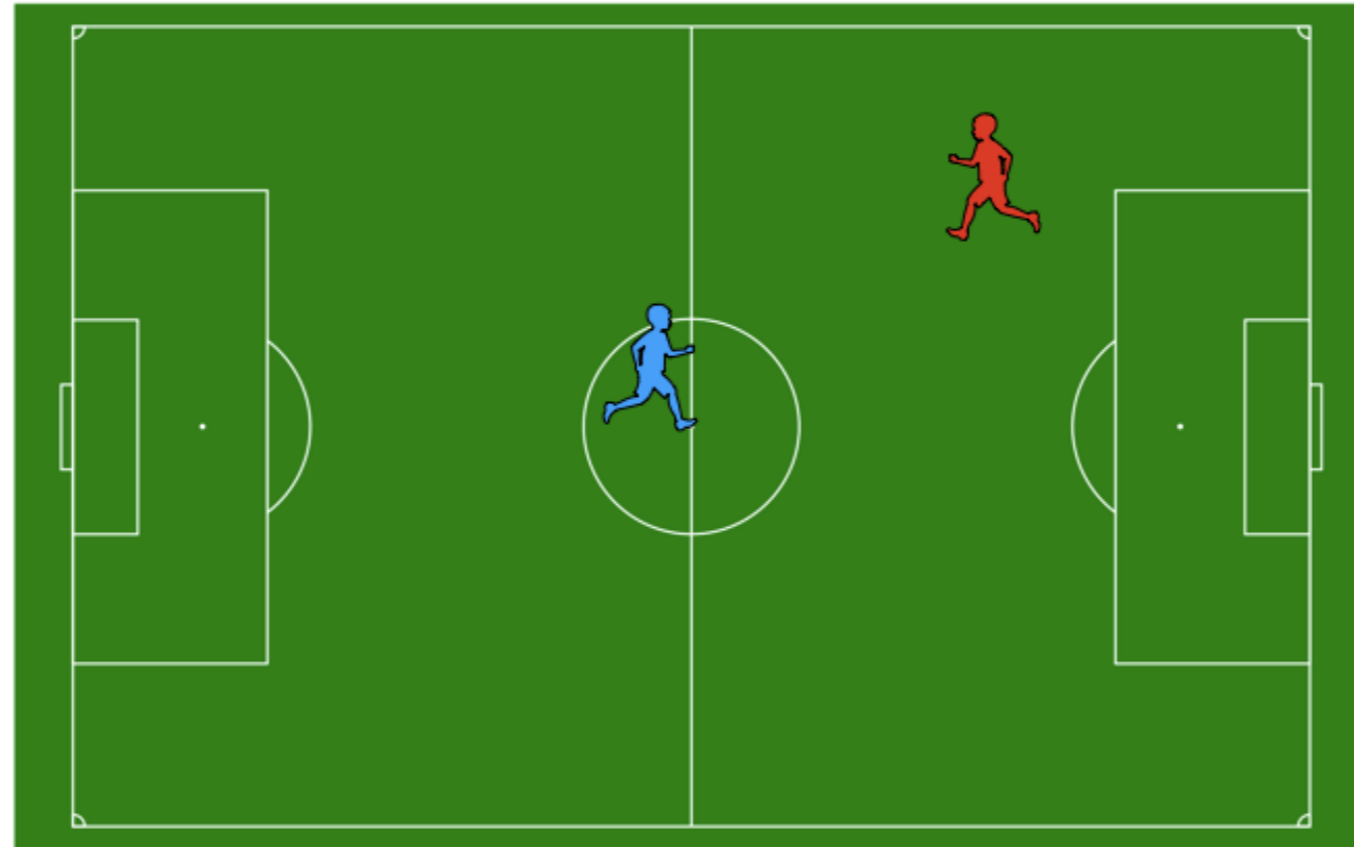
Distance vs. Similarity

$$\textit{Distance} = 1 - \textit{Similarity}$$

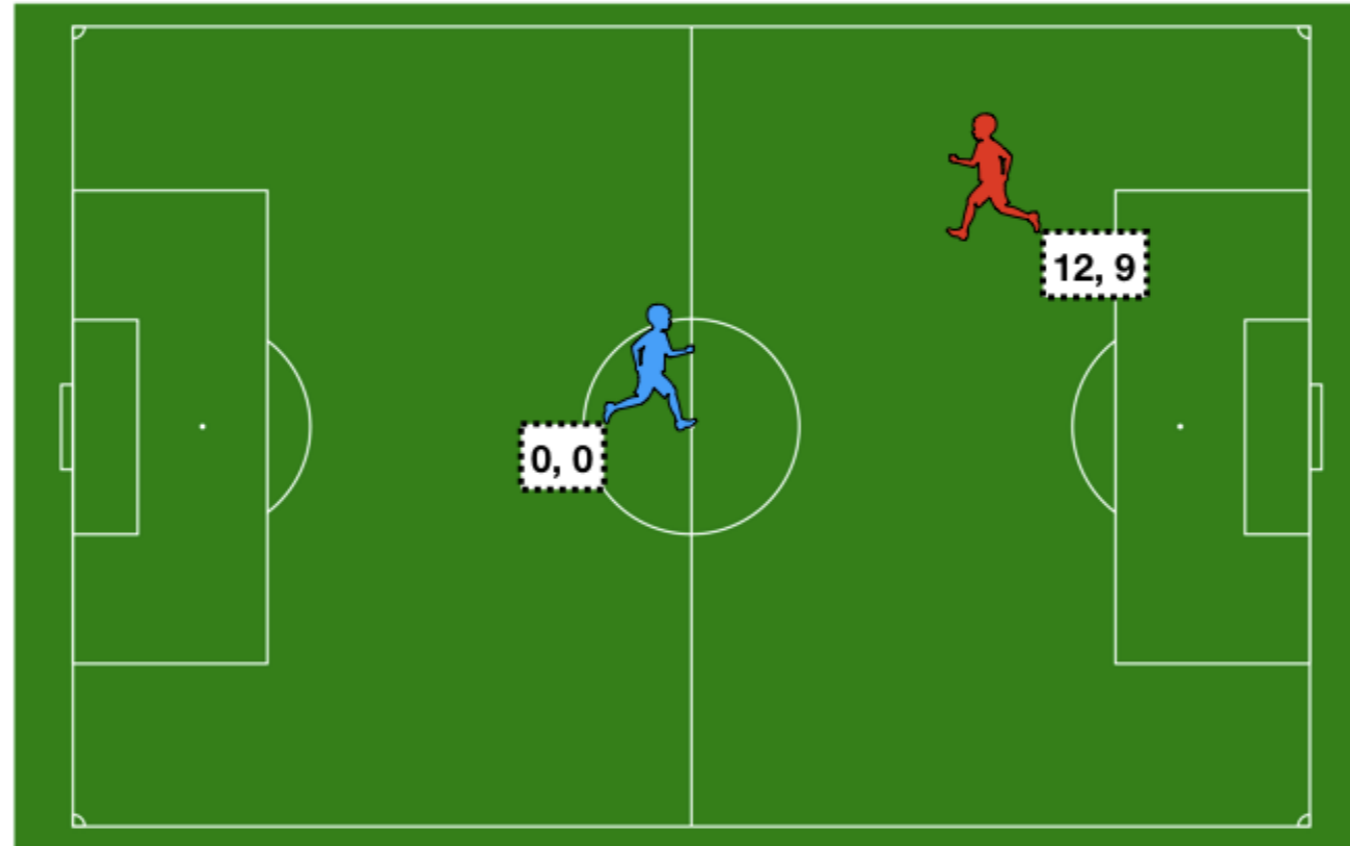
Distance between two players



Distance between two players

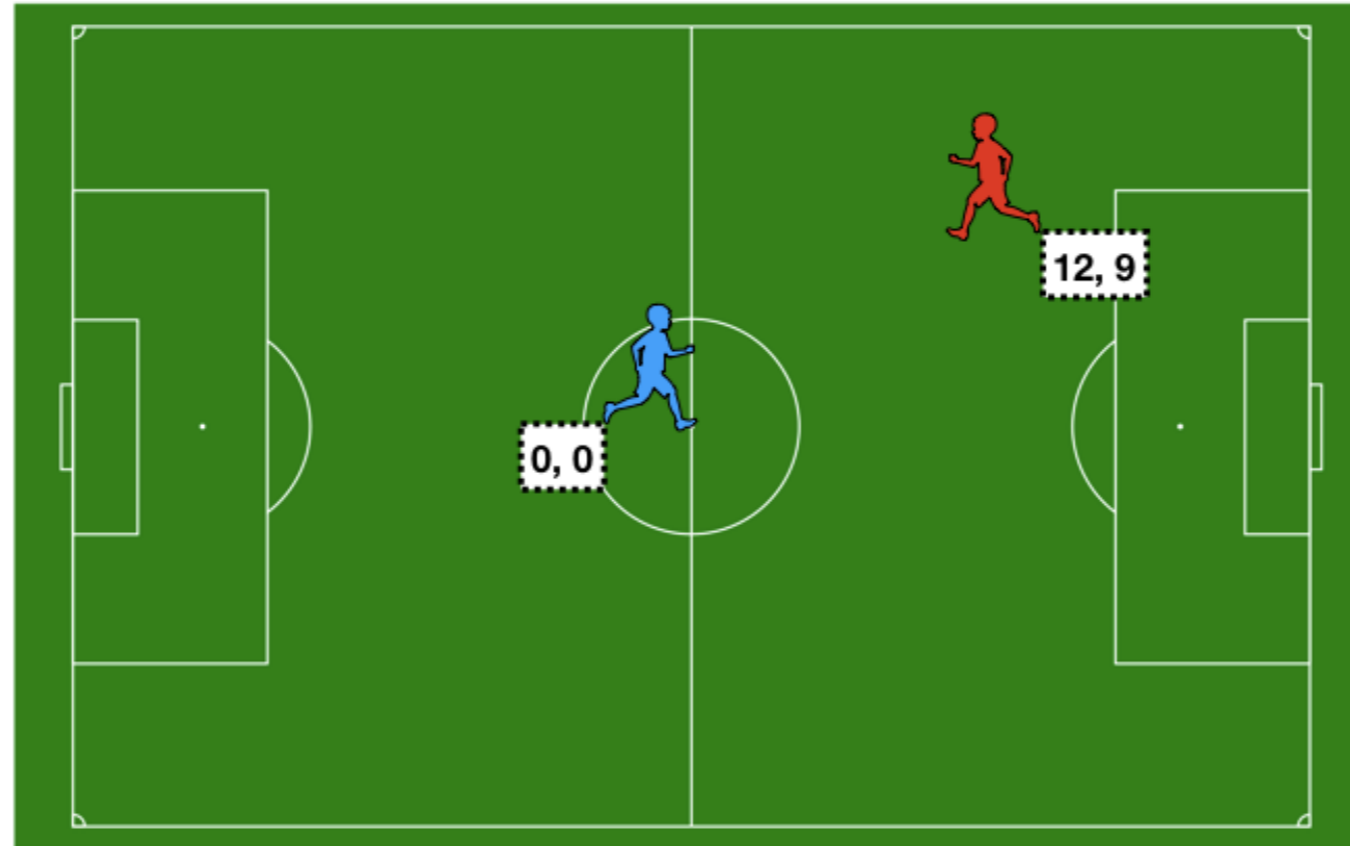


Distance between two players



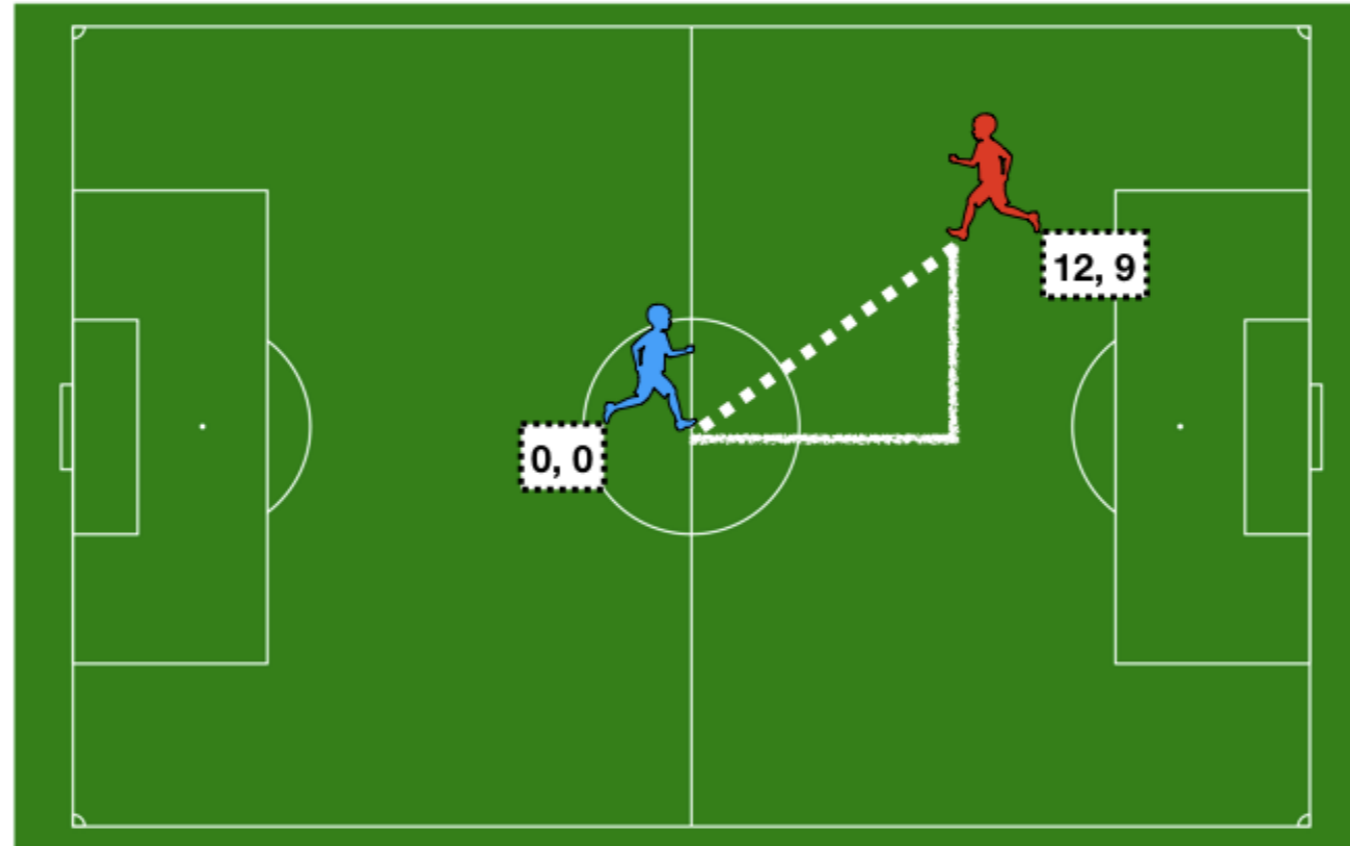
Distance between two players

	X	Y
Blue	0	0
Red	12	9



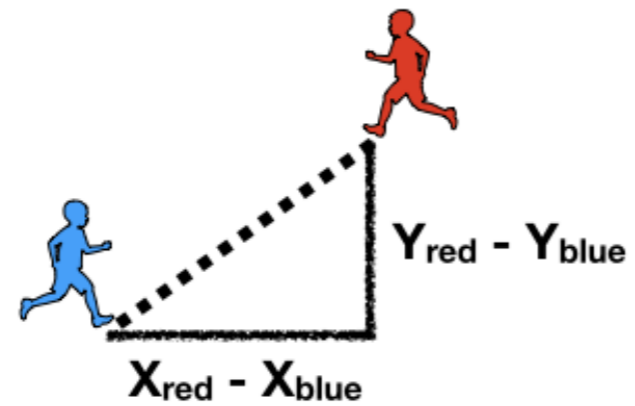
Distance between two players

	X	Y
Blue	0	0
Red	12	9



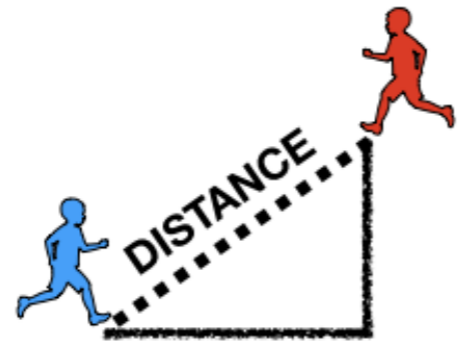
Distance between two players

	X	Y
Blue	0	0
Red	12	9



Distance between two players

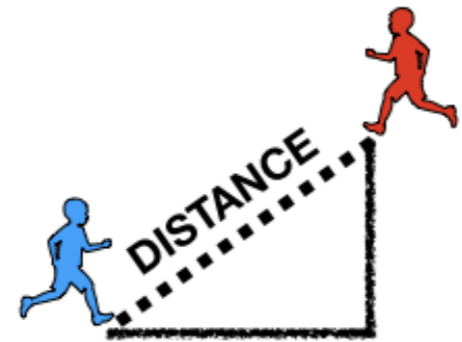
	X	Y
Blue	0	0
Red	12	9



$$= \sqrt{(X_{\text{red}} - X_{\text{blue}})^2 + (Y_{\text{red}} - Y_{\text{blue}})^2}$$

Distance between two players

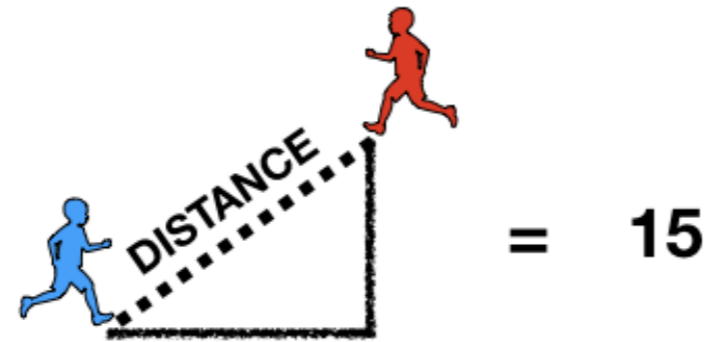
	X	Y
Blue	0	0
Red	12	9



$$= \sqrt{(12 - 0)^2 + (9 - 0)^2}$$

Distance between two players

	X	Y
Blue	0	0
Red	12	9



dist() function

```
print(two_players)
```

```
   X  Y  
BLUE 0  0  
RED  9 12
```

```
dist(two_players, method = 'euclidean')
```

```
   BLUE  
RED  15
```

More than 2 observations

```
print(three_players)
```

```
      X  Y  
BLUE  0  0  
RED   9 12  
GREEN -2 19
```

```
dist(three_players)
```

```
      BLUE      RED  
RED  15.00000  
GREEN 19.10497 13.03840
```


Let's practice!

CLUSTER ANALYSIS IN R

The importance of scale

CLUSTER ANALYSIS IN R



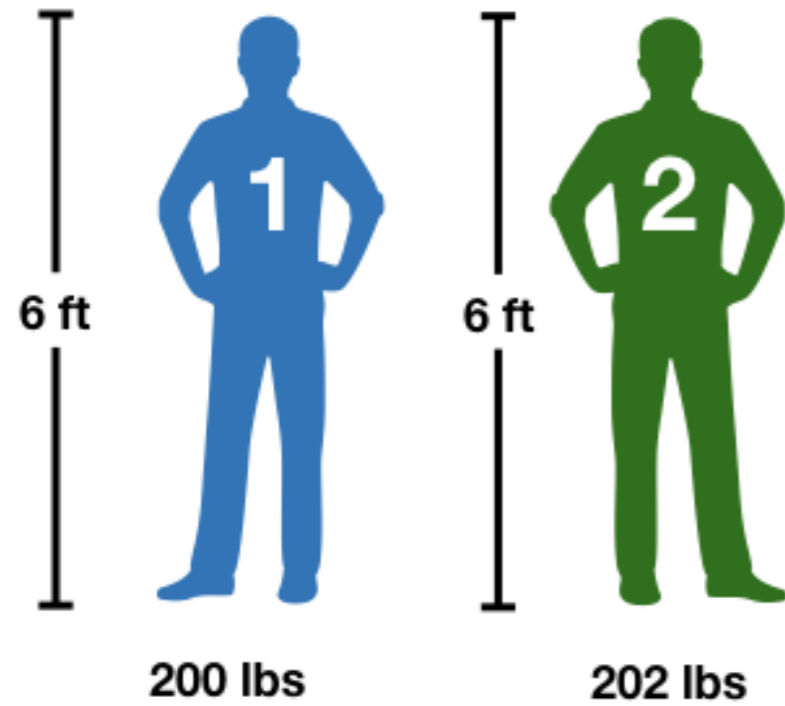
Dmitriy (Dima) Gorenshteyn

Lead Data Scientist, Memorial Sloan
Kettering Cancer Center

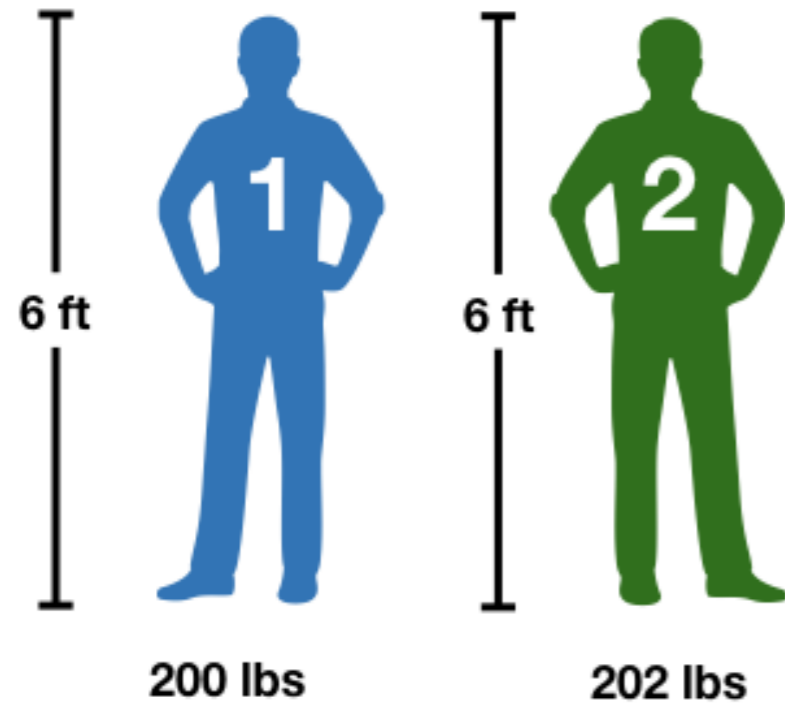
Distance between individuals

Observation	Height (feet)	Weight (lbs)
1	6.0	200
2	6.0	202
3	8.0	200
...
...

Distance between individuals

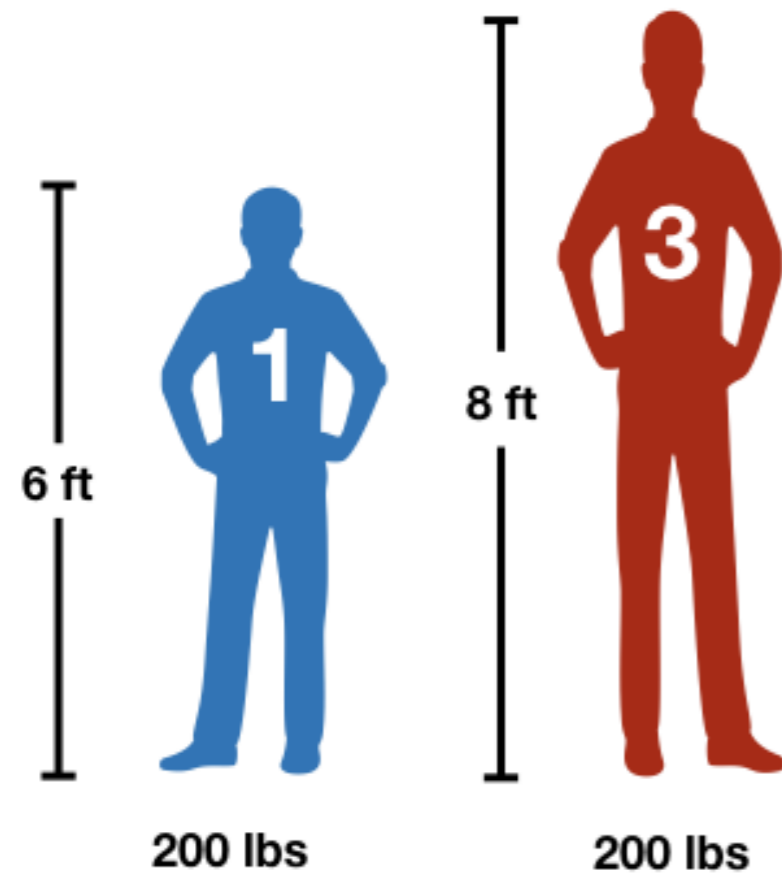


Distance between individuals

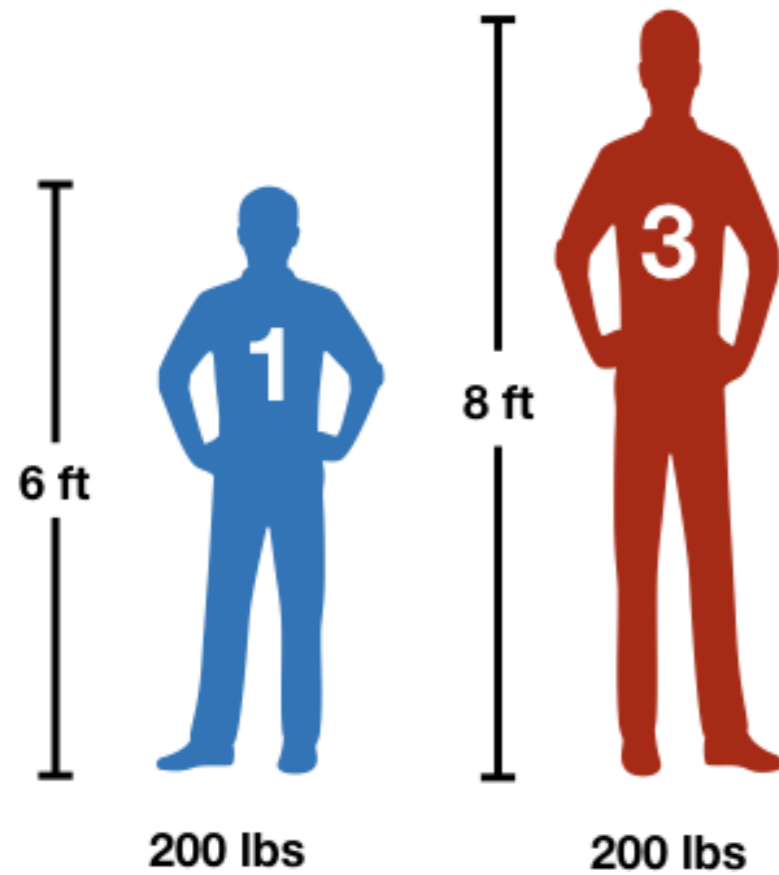


DISTANCE: 2

Distance between individuals

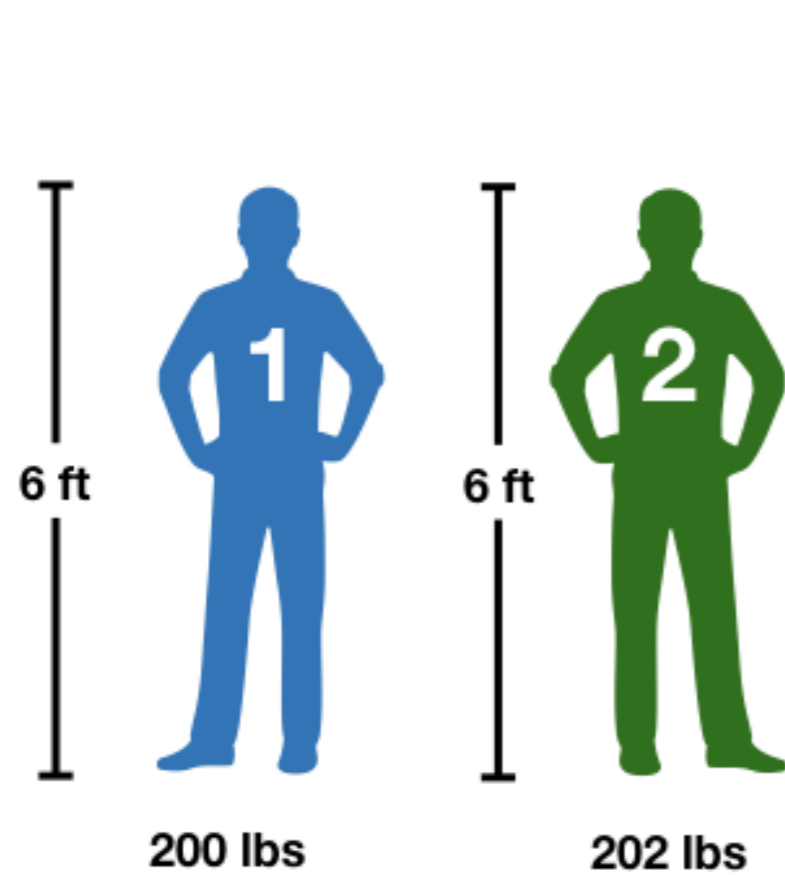


Distance between individuals

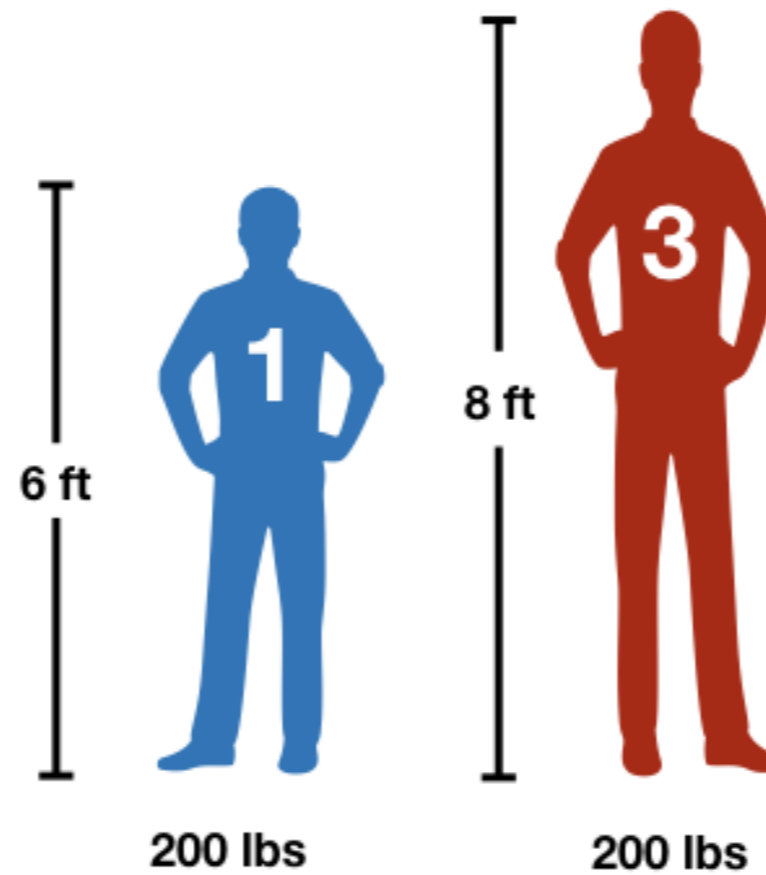


DISTANCE: 2

Distance between individuals



DISTANCE: **2**

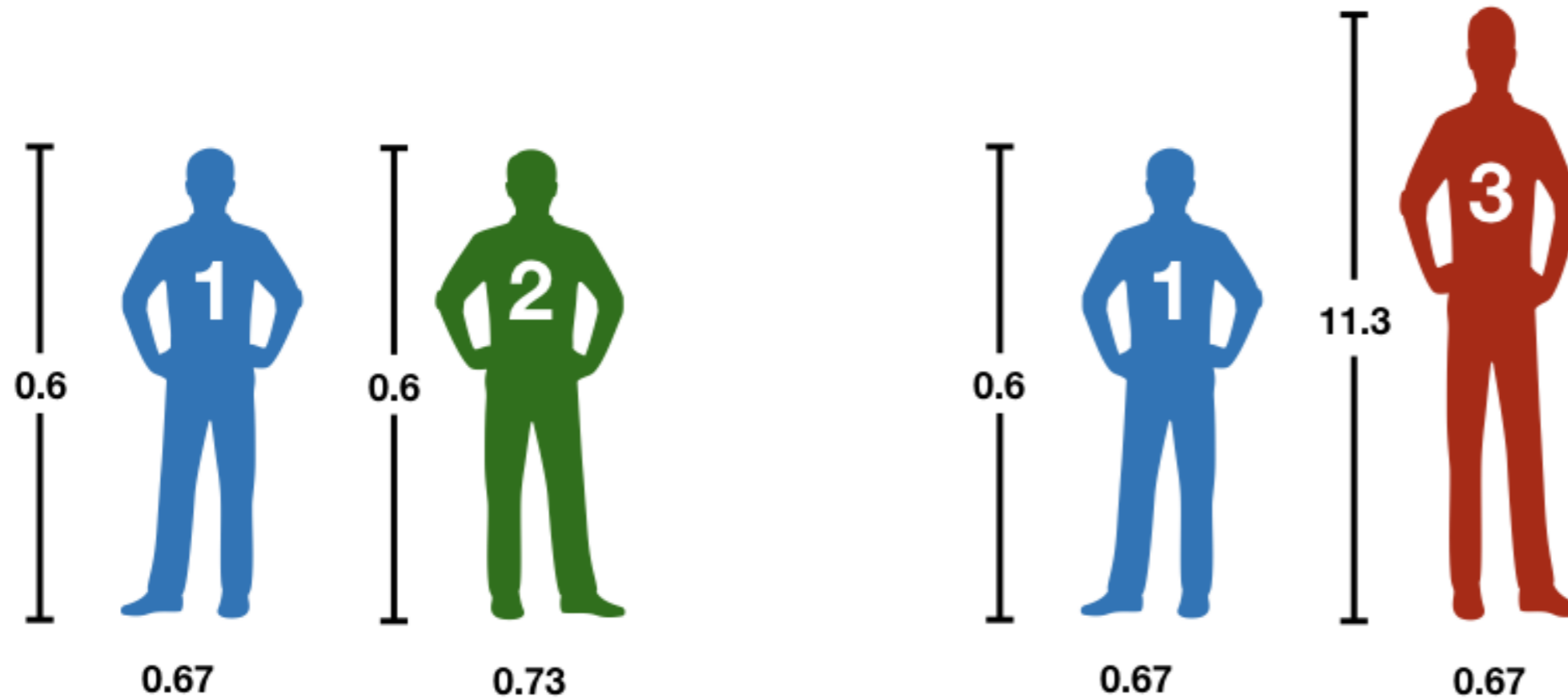


DISTANCE: **2**

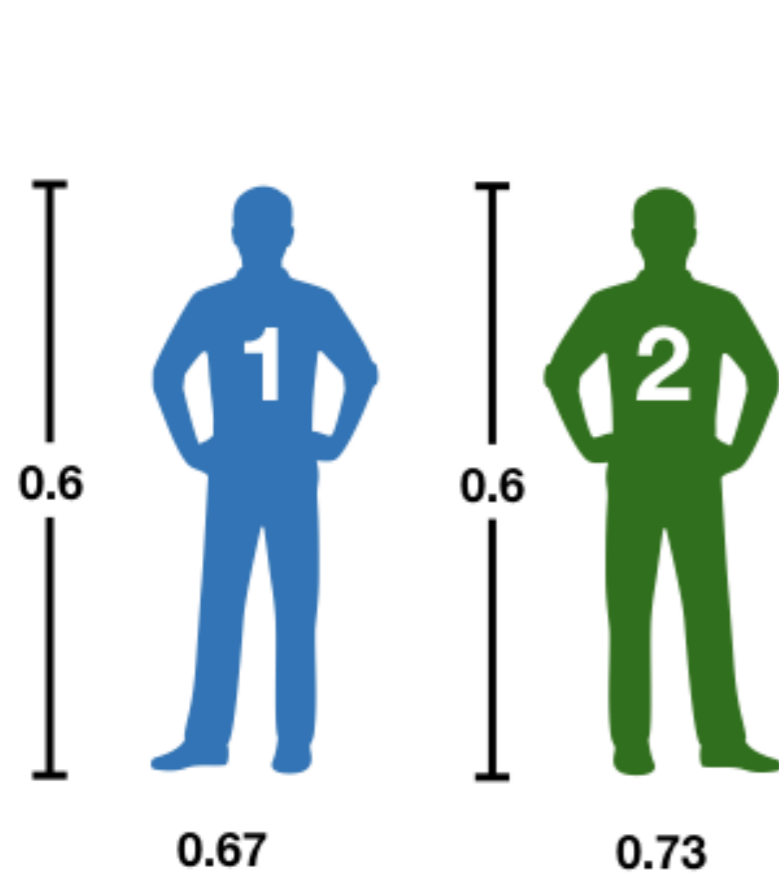
Scaling our features

$$height_{scaled} = \frac{height - \text{mean}(height)}{sd(height)}$$

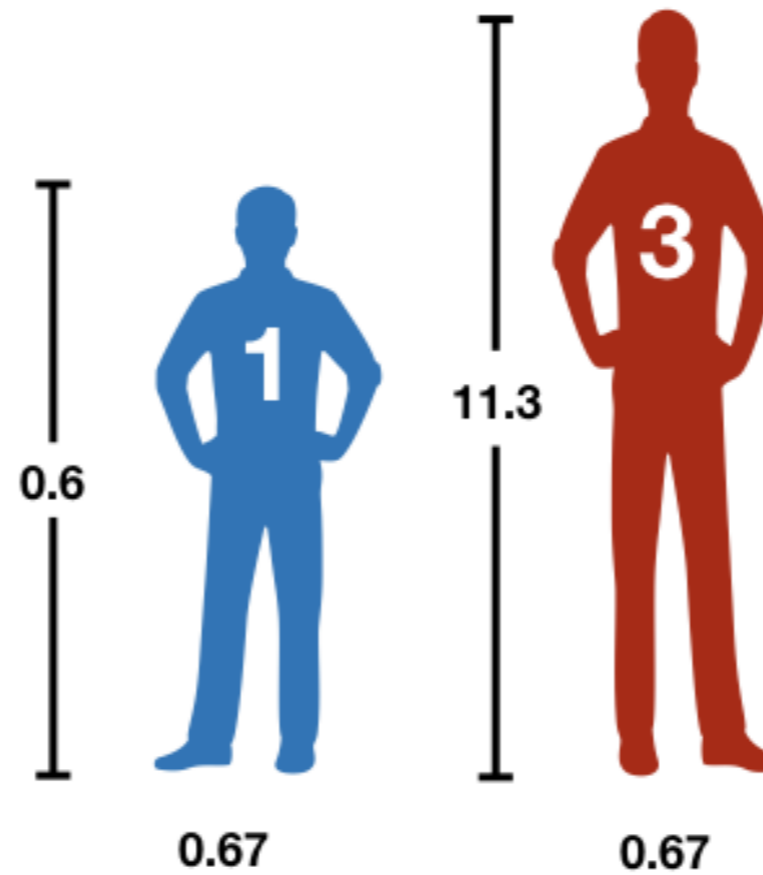
Distance between individuals



Distance between individuals



DISTANCE: **0.06**



DISTANCE: **10.7**

scale() function

```
print(height_weight)
```

```
  Height Weight
1      6    200
2      6    202
3      8    200
...    ...    ...
```

```
scale(height_weight)
```

```
  Height  Weight
1  0.60  0.67
2  0.60  0.73
3  11.3  0.67
...    ...    ...
```

Let's practice!
CLUSTER ANALYSIS IN R

Measuring distance for categorical data

CLUSTER ANALYSIS IN R



Dmitriy (Dima) Gorenshteyn

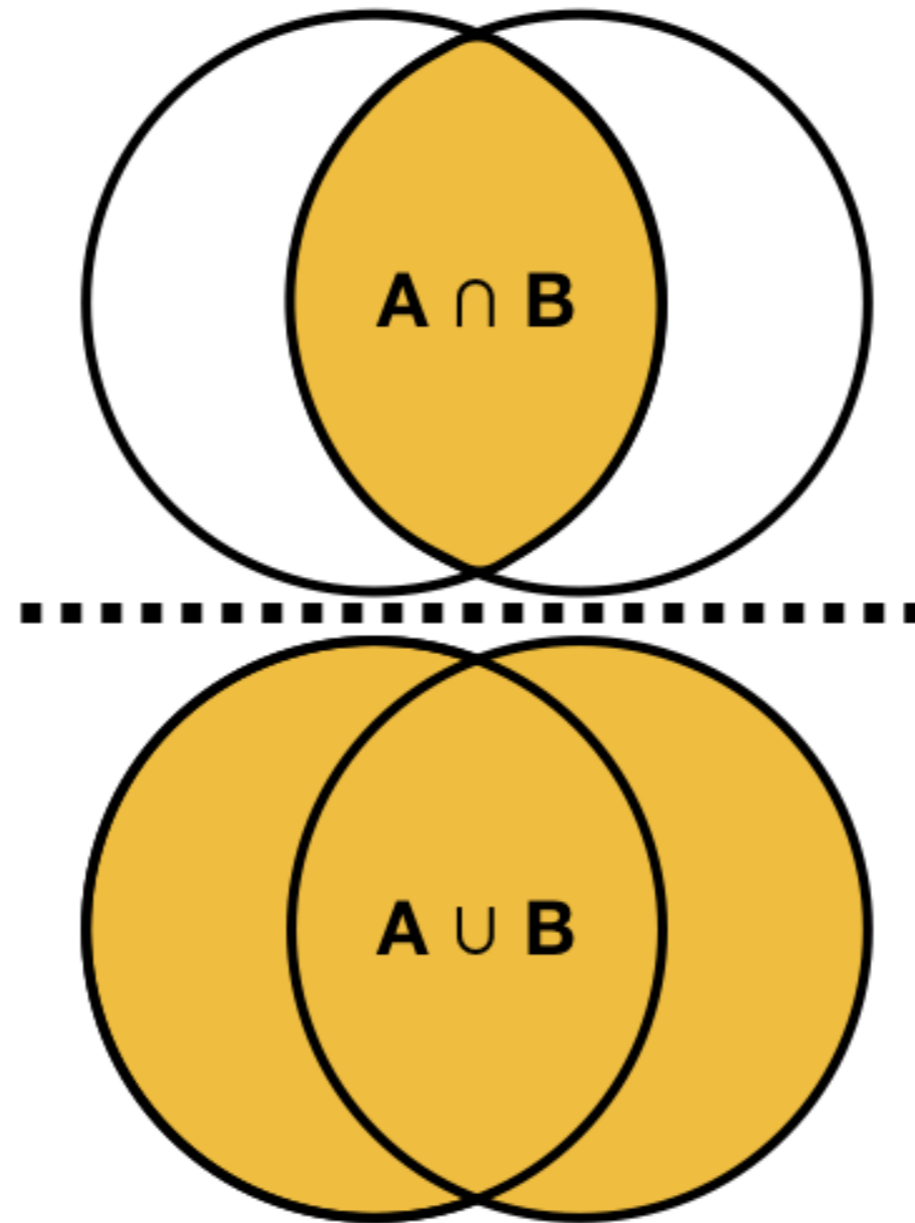
Lead Data Scientist, Memorial Sloan
Kettering Cancer Center

Binary data

	wine	beer	whiskey	vodka
1	TRUE	TRUE	FALSE	FALSE
2	FALSE	TRUE	TRUE	TRUE
...

Jaccard index

$$J(A, B) = \frac{A \cap B}{A \cup B}$$



Calculating Jaccard distance

	wine	beer	whiskey	vodka
1	TRUE	TRUE	FALSE	FALSE
2	FALSE	TRUE	TRUE	TRUE

$$J(1, 2) = \frac{1 \cap 2}{1 \cup 2} = \frac{1}{4} = 0.25$$

$$\text{Distance}(1, 2) = 1 - J(1, 2) = 0.75$$

Calculating Jaccard distance in R

```
print(survey_a)
```

```
  wine  beer whiskey vodka  
  <lgl> <lgl>   <lgl> <lgl>  
1  TRUE  TRUE   FALSE FALSE  
2 FALSE  TRUE    TRUE  TRUE  
3  TRUE FALSE    TRUE FALSE
```

```
dist(survey_a, method = "binary")
```

```
      1      2  
2 0.7500000  
3 0.6666667 0.7500000
```

More than two categories

	color	sport
1	red	soccer
2	green	hockey
3	blue	hockey
4	blue	soccer

	colorblue	colorgreen	colorred	sporthockey	sportsoccer
1	0	0	1	0	1
2	0	1	0	1	0
3	1	0	0	1	0
4	1	0	0	0	1

Dummification in R

```
print(survey_b)
```

```
  color sport
1   red soccer
2 green hockey
3  blue hockey
4  blue soccer
```

```
library(dummies)
dummy.data.frame(survey_b)
```

```
  colorblue colorgreen colorred sporthockey sportsoccer
1         0         0         1         0         1
2         0         1         0         1         0
3         1         0         0         1         0
4         1         0         0         0         1
```

Generalizing categorical distance in R

```
print(survey_b)
```

```
  color sport
1   red soccer
2 green hockey
3  blue hockey
4  blue soccer
```

```
dummy_survey_b <- dummy.data.frame(survey_b)
dist(dummy_survey_b, method = 'binary')
```

```
      1      2      3
2 1.0000000
3 1.0000000 0.6666667
4 0.6666667 1.0000000 0.6666667
```

Let's practice!

CLUSTER ANALYSIS IN R